

THE CHOSEN



**Season 4  
Background**

**COSTUME & PROP  
GUIDE**

## BACKGROUND COSTUME GUIDE

Thank you for joining The Chosen: Season Four in Goshen, Utah. Here are the guidelines for wardrobe you have volunteered to provide for yourself on the day. In this episode, we will want clothing looks from five separate regional groups or “factions” that are coming to hear Jesus speak. The following are guidelines to help you.

- **JEWISH:**

**FABRICS...**Most fabrics used in the 1<sup>st</sup> Century were very slubby and nubby. Texture was visible with a very rough-hewn surface. Natural fibers such as flax (*linen*), hemp, and wool were used. Stripes were sometimes woven in but usually no bold patterns. The finer the weave the more drape.



**COLOR PALETTE:** We use MUTED desert colors...

- Brown
- Tan
- Burgundy
- Dull Orange
- Rust
- Olive Green
- Sage Green
- Pale Blue
- Pale Aqua
- Ochre
- Dull Reds
- Some Black

**What we can NOT use...**

- No sparkle
- No Hot Pink
- No Neon
- No Solid White
- No Dark Purple
- No Royal Blue

**FOOTWEAR:** Think Jesus Sandals...flat, no heels, comfortable (*it's going to be a long day*).  
For research and purchase options go to Holy Land Market or J-Slips...  
these brands are also available on [amazon.com](https://www.amazon.com).





**ACCESSORIES:** Very little adornment was worn on the masses. Some higher-class folks wore fancier jewelry and accessories...Metal with stones.

- Simple strands of wooden beads
- Simple strands of sea glass beads
- Bracelets made of wood or metal
- Scarves
- Sashes
- Belting...no contemporary buckles, usually tied with leather lacing
- Small & ethnic looking earrings
- Small pouches across your body or attached at waist

**SOME HELPFUL TERMINOLOGY:**

**SCHMATA** = A dress...long, to the ankles or almost floor length for men & women. Usually of poorer quality, a bit ragged. Children's can be mid-calf length.

**TUNIC** = A short schmata...worn by men and young boys. Usually hits to below knees.

**OVER ROBE** = A long or shorter vest with or without sleeves to be worn as a second layer over the schmata.

If you are going to cut and sew your own costume, patterns are available.

**McCall's #M2060:**



Simplicity #4213:



Simplicity #4795:



Simplicity #4797:



- **GENTILES**

These groups can have characteristics referred to on page 1-7 But clothing can also be made from finer fabrics that drape in medium blues, greens...refer to color chart. Chitons, Himations (long shoulder wrap), & Togas for a bit of an upscale look.

**PLEASE:** For our purposes, **NO SOLID WHITE TOGAS**...Warmer colors such as shown on color chart, below.



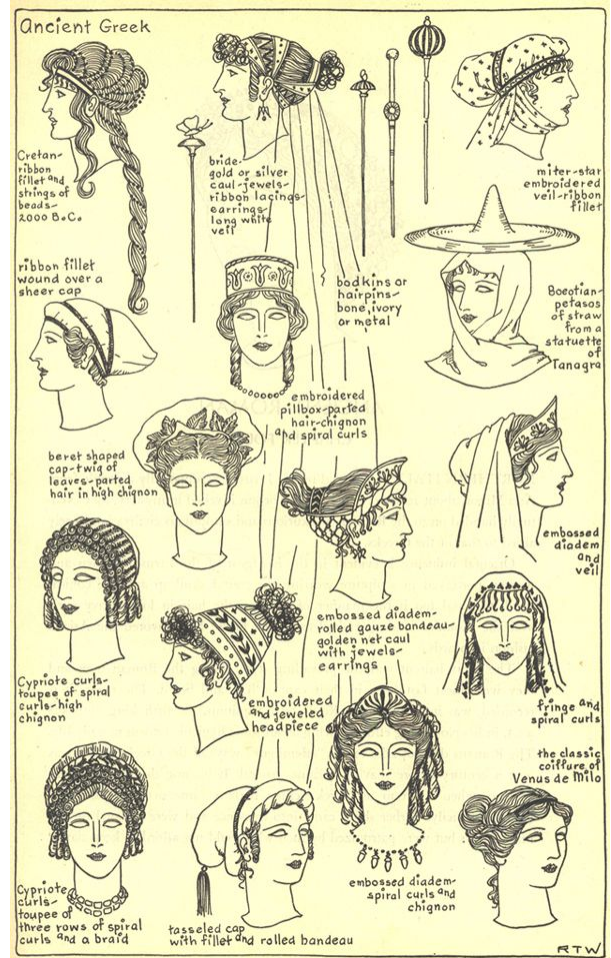
**GREEK:**



Necklaces & wide bracelets can be worn. Women's heads can be, but do not have to be covered. If not covered, please refer to pictures for appropriate hairstyles.

**Greek and Roman Men should be clean shaven.**  
For men and women hairstyles, refer to pictures.

ROMAN:



- **SYROPHOENICIANS:**

Colors can be more saturated...Deeper desert colors of orange, reds, turquoise, greens.

**Women...**

- Garments can have geometric embroidery.
- Head coverings
- Embroidered wide fabric belts
- Layered skirts
- Trim at hemlines
- Heavier Silver jewelry...no rhinestones

**Men...**

- Long belted robes over schmatas
- Sash wraps used as belts
- Lots of colorful layers
- Layered long or short skirts...refer to pictures...we would prefer longer skirts.



Babylonian king



Assyrian nobleman



Nobleman



Priest



Babylonian woman



Nobleman



Assyrian queen



Assyrian queen



## • NABATAEANS

These folks are of nomad Bedouin Tribes. Clothing can appear to have been gathered as they travel from place to place.

- Saturated orange, browns, teals, greens
- Lots of layers tied with belts
- Stripes
- Plain head wraps
- Head wraps with strand of colorful decoration or jewelry intertwined

### Jewelry:

- Larger pieces
- Silver
- Rustic
- Silver coins



These were extremely modest times...

**ADULTS...WOMEN:** Legs were always covered. Heads were always covered with a head scarf or shawl. A wide elastic headband can help keep hair off of your face. Then add a scarf to cover it.

**ADULTS...MEN:** Older men wore longer schmata. Younger men wore long schmata or shorter tunics. Over robe as layer piece...this piece is optional. May be worn over long or short garments.

**BELTS:** Can be worn by women and men...these are optional. These may be thin or wide leather strips or a scarf or pieces of long fabric.

**HAIRSTYLE:** Contemporary hairstyles will need to be covered with turban or over scarf. No bright colors.

**BEARDS:** Depending which faction you've chosen to dress as, men, please, let your beard grow...beards were worn by most men. They do not have to be long...but facial hair is acceptable and preferred. Keep in mind that having just a mustache or a goatee is not period appropriate. We won't ask you to modify them if you arrive with either, but you will probably not be in a close-up. However, if you've chosen Greek or Roman, you must be clean-shaven.

**WOMEN:** Come with little to no makeup. Foundation, concealer, powder and little mascara is fine.

- NO filled in eyebrows
- NO eyeliner
- No false lashes
- No lipstick
- NO acrylic, gel or painted nails! If they are painted please keep them nude colors. Keep that in mind for toenails (sandals) also.

## **NO VISIBLE PIERCINGS**

**NO TATTOOS:** please cover with a long sleeve or floor length costume piece or flesh-colored tights.

**CAPS:** These are NOT beanies that we wear today. They wore caps that were small, and mostly covered the crown of the head. Commonly made from the same cloth or strips of cloth as the schmata. They could be crocheted or knitted and in the same neutral color.

## PROP GUIDE

Thank you for joining The Chosen: Season Four in Goshen, Utah. Here are a few guidelines and ideas for gathering props you can carry with you on the day. The props can be used to carry personal items or for snacks. You'll want somewhere to stash eyeglasses/sunglasses and your mask or face covering. Remember, all props should be First Century appropriate. Here are some ideas to help with that:

**SLING BAG** - Use loose weave fabrics, muted colors (*golds, rusts, gray, brown, brick red, tan, NO White*) that look handwoven or have a lot of texture to them, if possible (*jute, linen, hessian, burlap, hand woven, knitted, sheep skin, leather, rattan, slubbed*).



**FOOD** - If you would like to bring period snacks for your basket, these would include: pita bread, grapes, pomegranates, apples, dates, figs, nuts, & dried fruit.

**MATS/BLANKETS** – We encourage you to bring an appropriate blanket to sit on. Again, they should be muted colors, and in the style of the First Century.

NO white, NO neon, NO Purple, NO bright pink, bright blue, etc. Print can be stripes, solid, Moroccan, Kilim (*NO floral, NO plaid, NO Southwest/Navajo/Aztec*). Appropriate blanket type would be Serape (*Falsa Saltillo Rasta variety best, again no multi bright colors*) wool, bamboo beach/yoga mat, sheep skin, burlap, or a grass mat.



**KEYWORD SEARCHES:**

**BAGS** - Sling bag, Woven Cotton Bag, Hippie Hobo bag, Boho bag, Shoulder bag, Messenger bag, Crossbody bag, Monk Bag, Rattan Bag, Whicker Bag, Beach Bag

**BLANKETS/MATS** - Kilim Blanket, Moroccan Blanket, Woven Blanket, Wool Blanket, Hand Woven Blanket, Rasta Serape, Falsa Serape, Saltillo Serape, Loose Weave Blanket, Bamboo Mat, Grass Mat Rug, Natural Beach Blanket