



THE CHOSEN

**COSTUME**

---

**& PROP**

---

**GUIDE**

S E A S O N 5

Guide Date:  
02/29/2024

## ■ Thanks for joining us as an extra this season!

We're really looking forward to working with you, and an essential part of that work is your costume. This booklet gives you the guidelines for making a great one.

You have the option to wear clothing representing one of five regional groups gathering to celebrate Passover, so you'll find details about each group in this guide.

### **TWO NOTES BEFORE YOU BEGIN**

*1. Please do not distress your garments. Your character would be wearing his or her best for Passover.*

*2. Costume Rentals: If you'd prefer to rent or buy a costume instead of making it, we recommend checking out Last Looks Creations at [www.lastlookscreations.com](http://www.lastlookscreations.com)*

# Contents

---

**02 - Jewish**

**10 - Gentile**

12 - Greek

13 - Roman

14 - Syrophenician

16 - Nabatean

**17 - General Guidelines**

**20 - Prop Guidelines**

# JEWISH



# Fabrics

---

Most fabrics used in the 1st Century were very slubby and nubby. Cloth texture was visible with a very rough-hewn surface. Natural fibers such as flax (linen), hemp, and wool were used. Stripes were sometimes woven in, but there were usually no bold patterns. The finer the weave, the more drape.



# Color Palette

---



## Please use muted desert colors:

---

- Brown
- Tan
- Burgundy
- Dull Orange
- Rust
- Olive Green
- Sage Green
- Pale Blue
- Pale Aqua
- Ochre
- Dull Reds
- Some Black

## Please do not use:

---

- Sparkle
- Hot Pink
- Neon
- Solid White
- Dark Purple
- Royal Blue

# Footwear

Think Jesus sandals—flat, no heels, and comfortable (it’s going to be a long day). For research and purchase options, you can go to Holy Land Market or J-Slips. These brands are also available on amazon.com.

## Women’s



## Men’s



# Accessories

---

The masses wore very little adornment. Some higher-class folks wore fancier jewelry and accessories, metal with stones.

- Simple strands of wooden beads
- Simple strands of sea glass beads
- Bracelets made of wood or metal
- Scarves
- Sashes
- Belting...no contemporary buckles, usually tied with leather lacing
- Small & ethnic looking earrings
- Small pouches across your body or attached at waist

# Terminology

---

**SCHMATA**: A dress...long, to the ankles or almost floor length for men & women. Usually of poorer quality, a bit ragged. Children's can be mid-calf length.

**TUNIC**: A short schmata...worn by men and young boys. Usually hits to below knees.

**OVER ROBE**: A long or shorter vest with or without sleeves to be worn as a second layer over the schmata.

# Patterns

---

You can pick up one of the patterns below if you want to sew your costume.

## McCall's #M2060



# | Simplicity #4213



# Simplicity #4795



# GENTILE



# Fabrics

---

Gentile clothing can have the characteristics described in the Jewish section, however, it can be made from more delicate fabrics that drape, and the colors can be more vibrant, as seen in the chart below.

Chitons, himations (long shoulder wrap), and togas are permissible. **Please do not wear solid white.**



# Greek

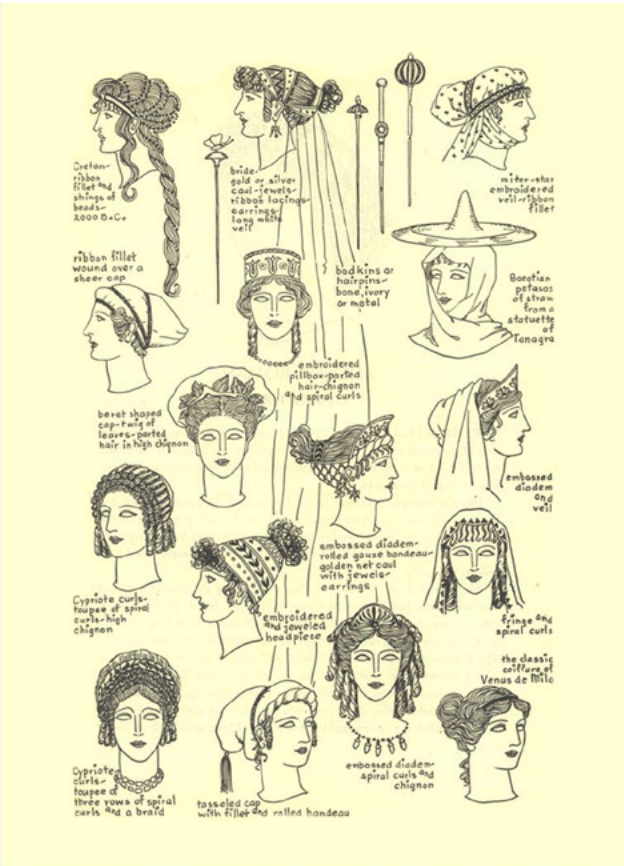
---

Necklaces and wide bracelets can be worn. Women may cover their heads, but it's not required. If you choose not to cover your head, refer to the pictures for appropriate hairstyles.

Greek and Roman men should be clean shaven. Hair should be styled like the pictures provided.



# Roman



# Syrophoenician

---

Colors can be more saturated. Deeper desert colors such as oranges, reds, turquoise, and greens are permissible.

## For Women

---

- Garments can have geometric embroidery
- Head coverings are worn
- Embroidered wide fabric belts
- Layered skirts
- Trim at hemlines
- Heavier silver jewelry, but no rhinestones

## For Men

---

- Long, belted robes over schmatas
- Sash wraps are used as belts
- Lots of colorful layers
- Layered long or short skirts, refer to pictures. Longer skirts are preferred.



# Nabatean

---

These peoples are from nomadic Bedouin Tribes. Clothing can appear to be a mishmash of items collected during their travels.

- Saturated oranges, browns, teals, and greens
- Lots of layers tied with belts
- Stripes
- Head wraps—plain or intertwined with colorful bands or jewelry

## Jewelry

---

- Larger pieces
- Silver metal or coins
- Rustic



# EVERYONE



# Women

---

**Hebrew women's** legs were always covered, and heads were always covered with a head scarf or shawl. You can use a wide elastic headband to help keep hair off your face, then cover it with a scarf. No bare shoulders.

**Gentile women** weren't quite as modest. Your hair doesn't have to be covered, and you can weave ribbon, scarves, or beads into it.

## | *Makeup*

Women should wear little to no makeup. Foundation, concealer, powder, and a little mascara is fine.

- No filled in eyebrows
- No eyeliner
- No false lashes
- No lipstick
- No acrylic, gel, or painted nails! If painted, please keep them nude colors. Keep that in mind for toenails (sandals) also.

# Men

---

Older men wore long schmata. Younger men wore either long schmata or short tunics. An over robe as layer piece is optional and may be worn over long or short garments.

## | *Beards*

Unless you've chosen to be Greek or Roman, who must be clean-shaven, please let your beard grow. It doesn't have to be long, but

facial hair is acceptable and preferred. Neither a mustache nor a goatee is period appropriate. If you arrive with either, you will probably not be in a close-up.

## **Hairstyles**

---

Please cover your contemporary hairstyles with a turban or scarf. Remember, no bright colors.

## **Tattoos**

---

Please cover any tattoos with long sleeves, a floor length costume, or flesh-colored tights.

## **Belts**

---

These can be worn by women and men and are optional. They may be thin or wide leather strips, a scarf, or pieces of long fabric.

## **Caps**

---

These are not the beanies we wear today. They wore small caps that covered the crown of the head and were commonly made from the same cloth as the schmata. They can be crocheted or knitted and in the same neutral color.

# PROP GUIDE

---



# Sling Bags & Baskets

---

Choose loose weave fabrics of muted colors (golds, rusts, gray, brown, brick red, tan, NO white) that look hand-woven or have a lot of texture to them—jute, linen, hessian, burlap, hand woven, knitted, sheep skin, leather, rattan, or slubbed.



## Food

---

If you want to have period-accurate snacks for your basket, you can bring pita bread, grapes, pomegranates, apples, dates, figs, nuts, and dried fruit.

# Mats & Blankets

---

We encourage you to bring a 1st-Century style blanket to sit on.

## Appropriate styles:

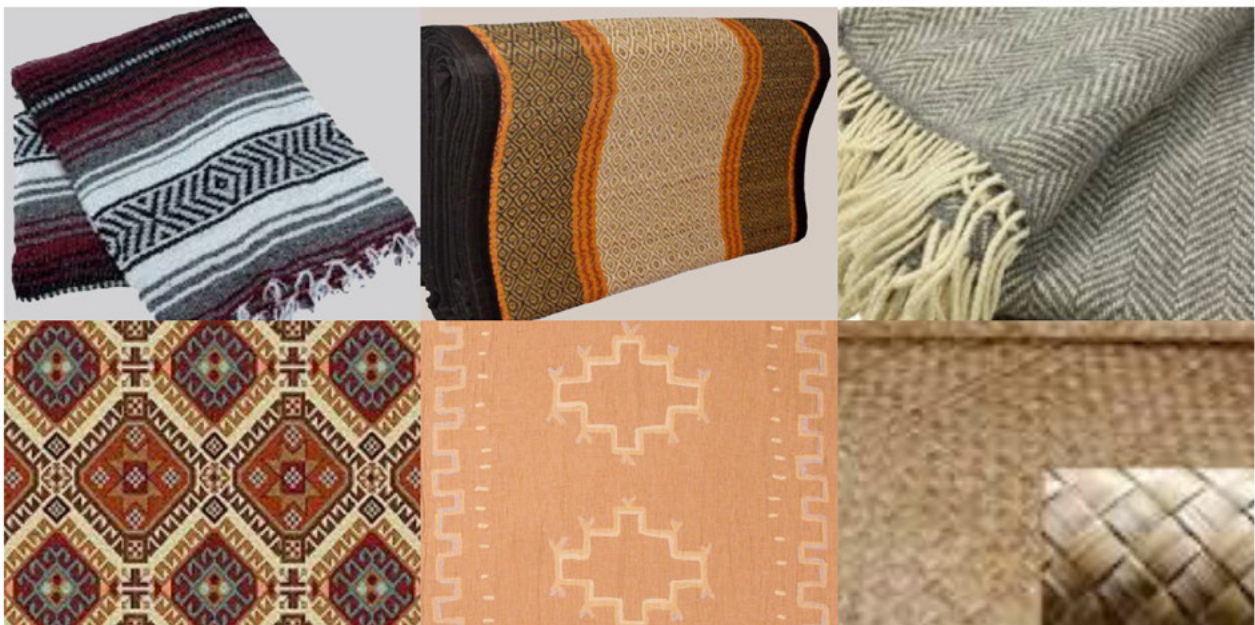
---

- serape (Falsa, Saltillo, and Rasta varieties are best)
- wool
- bamboo
- beach/yoga mat
- sheep skin
- burlap or grass mat
- solid, striped, Moroccan, and Kilim prints

## Styles to avoid:

---

- bright colors—white, neon, purple, pink, blue, etc.
- floral, plaid, Southwest, Navajo, and Aztec patterns



# Prop Keyword Search

---

Searching the keywords below will help you find period-appropriate props.

## Bags

---

Sling bag, Woven Cotton Bag, Hippie Hobo bag, Boho bag, Shoulder bag, Messenger bag, Crossbody bag, Monk Bag, Rattan Bag, Wicker Bag, Beach Bag

## Blankets and Mats

---

Kilim Blanket, Moroccan Blanket, Woven Blanket, Wool Blanket, Hand Woven Blanket, Rasta Serape, Falsa Serape, Saltillo Serape, Loose Weave Blanket, Bamboo Mat, Grass Mat Rug, Natural Beach Blanket

# THANK YOU

