



THE CHOSEN

COSTUME

& PROP GUIDE

SEASON 4

Guide Date:
05/31/2023

■ *Thanks for joining us as an extra this season!*

We're really looking forward to working with you, and an essential part of that work is your costume. This booklet gives you the guidelines for making a great one.

You have the option to wear clothing representing one of five regional groups gathering to see Jesus, so you'll find details about each group in this guide.

Contents

02 - Jewish

10 - Gentile

12 - Greek

13 - Roman

14 - Syrophoenician

16 - Nabatean

17 - General Guidelines

20 - Prop Guidelines

JEWISH



Fabrics

Most fabrics used in the 1st Century were very slubby and nubby. Cloth texture was visible with a very rough-hewn surface. Natural fibers such as flax (linen), hemp, and wool were used. Stripes were sometimes woven in, but there were usually no bold patterns. The finer the weave, the more drape.



Color Palette



Please use muted desert colors:

- Brown
- Tan
- Burgundy
- Dull Orange
- Rust
- Olive Green
- Sage Green
- Pale Blue
- Pale Aqua
- Ochre
- Dull Reds
- Some Black

Please do not use:

- Sparkle
- Hot Pink
- Neon
- Solid White
- Dark Purple
- Royal Blue

Footwear

Think Jesus sandals—flat, no heels, and comfortable (it’s going to be a long day). For research and purchase options, you can go to Holy Land Market or J-Slips. These brands are also available on amazon.com.

Women’s



Men’s



Accessories

The masses wore very little adornment. Some higher-class folks wore fancier jewelry and accessories, metal with stones.

- Simple strands of wooden beads
- Simple strands of sea glass beads
- Bracelets made of wood or metal
- Scarves
- Sashes
- Belting...no contemporary buckles, usually tied with leather lacing
- Small & ethnic looking earrings
- Small pouches across your body or attached at waist

Terminology

SCHMATA: A dress...long, to the ankles or almost floor length for men & women. Usually of poorer quality, a bit ragged. Children's can be mid-calf length.

TUNIC: A short schmata...worn by men and young boys. Usually hits to below knees.

OVER ROBE: A long or shorter vest with or without sleeves to be worn as a second layer over the schmata.

Patterns

You can pick up one of the patterns below if you want to sew your costume.

| McCall's #M2060



| Simplicity #4213



Simplicity #4795



GENTILE



Fabrics

Gentile clothing can have the characteristics described in the Jewish section, however, it can be made from more delicate fabrics that drape, and the colors can be more vibrant, as seen in the chart below.

Chitons, himations (long shoulder wrap), and togas are permissible. **Please do not wear solid white.**



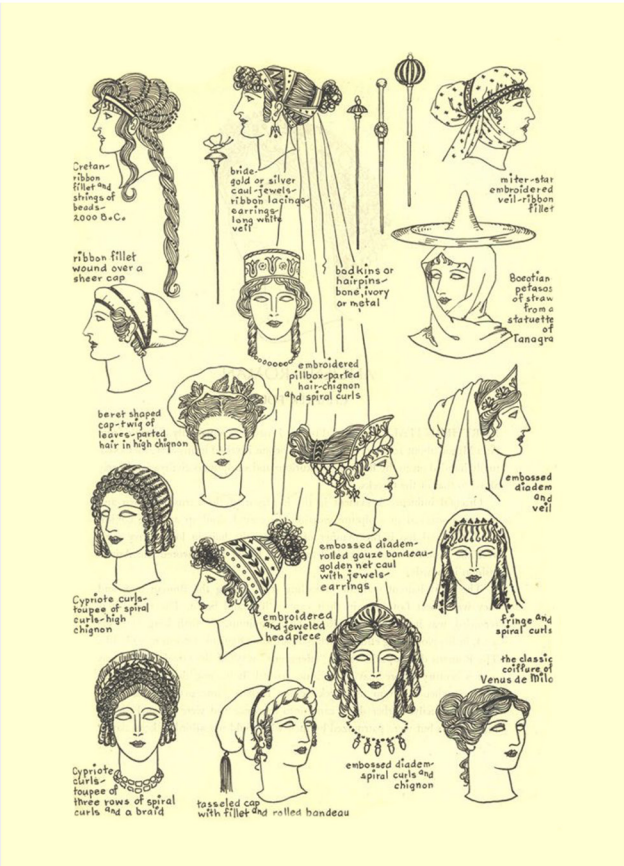
Greek

Necklaces and wide bracelets can be worn. Women may cover their heads, but it's not required. If you choose not to cover your head, refer to the pictures for appropriate hairstyles.

Greek and Roman men should be clean shaven. Hair should be styled like the pictures provided.



Roman



Syrophoenician

Colors can be more saturated. Deeper desert colors such as oranges, reds, turquoise, and greens are permissible.

For Women

- Garments can have geometric embroidery
- Head coverings are worn
- Embroidered wide fabric belts
- Layered skirts
- Trim at hemlines
- Heavier silver jewelry, but no rhinestones

For Men

- Long, belted robes over schmatas
- Sash wraps are used as belts
- Lots of colorful layers
- Layered long or short skirts, refer to pictures. Longer skirts are preferred.



Nabatean

These peoples are from nomadic Bedouin Tribes. Clothing can appear to be a mishmash of items collected during their travels.

- Saturated oranges, browns, teals, and greens
- Lots of layers tied with belts
- Stripes
- Head wraps—plain or intertwined with colorful bands or jewelry

Jewelry

- Larger pieces
- Silver metal or coins
- Rustic



EVERYONE



Women

Legs were always covered and heads were always covered with a head scarf or shawl. You can use a wide elastic headband to help keep hair off your face, then cover it with a scarf.

| *Makeup*

Women should wear little to no makeup. Foundation, concealer, powder, and a little mascara is fine.

- No filled in eyebrows
- No eyeliner
- No false lashes
- No lipstick
- No acrylic, gel, or painted nails! If painted, please keep them nude colors. Keep that in mind for toenails (sandals) also.

Men

Older men wore long schmata. Younger men wore either long schmata or short tunics. An over robe as layer piece is optional and may be worn over long or short garments.

| *Beards*

Unless you've chosen to be Greek or Roman, who must be clean-shaven, please let your beard grow. It doesn't have to be long, but facial hair is acceptable and preferred. Neither a mustache nor a goatee is period appropriate. If you arrive with either, you will probably not be in a close-up.

Hairstyles

Please cover your contemporary hairstyles with a turban or scarf. Remember, no bright colors.

Tattoos

Please cover any tattoos with long sleeves, a floor length costume, or flesh-colored tights.

Belts

These can be worn by women and men and are optional. They may be thin or wide leather strips, a scarf, or pieces of long fabric.

Caps

These are not the beanies we wear today. They wore small caps that covered the crown of the head and were commonly made from the same cloth as the schmata. They can be crocheted or knitted and in the same neutral color.

PROP GUIDE



Sling Bags & Baskets

Choose loose weave fabrics of muted colors (golds, rusts, gray, brown, brick red, tan, NO white) that look hand-woven or have a lot of texture to them—jute, linen, hessian, burlap, hand woven, knitted, sheep skin, leather, rattan, or slubbed.



Food

If you want to have period-accurate snacks for your basket, you can bring pita bread, grapes, pomegranates, apples, dates, figs, nuts, and dried fruit.

Mats & Blankets

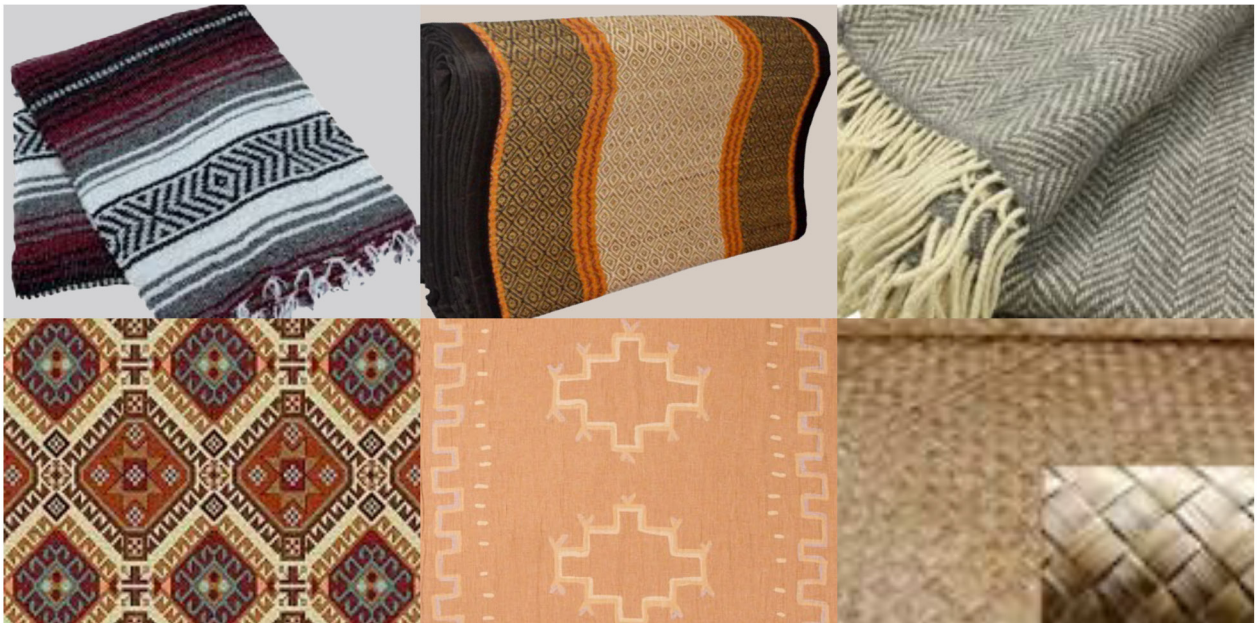
We encourage you to bring a 1st-Century style blanket to sit on.

Appropriate styles:

- serape (Falsa, Saltillo, and Rasta varieties are best)
- wool
- bamboo
- beach/yoga mat
- sheep skin
- burlap or grass mat
- solid, striped, Moroccan, and Kilim prints

Styles to avoid:

- bright colors—white, neon, purple, pink, blue, etc.
- floral, plaid, Southwest, Navajo, and Aztec patterns



Prop Keyword Search

Searching the keywords below will help you find period-appropriate props.

Bags

Sling bag, Woven Cotton Bag, Hippie Hobo bag, Boho bag, Shoulder bag, Messenger bag, Crossbody bag, Monk Bag, Rattan Bag, Wicker Bag, Beach Bag

Blankets and Mats

Kilim Blanket, Moroccan Blanket, Woven Blanket, Wool Blanket, Hand Woven Blanket, Rasta Serape, Falsa Serape, Saltillo Serape, Loose Weave Blanket, Bamboo Mat, Grass Mat Rug, Natural Beach Blanket

THANK YOU

