

The CHOSEN

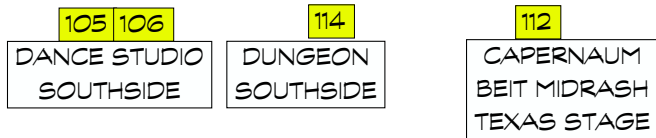
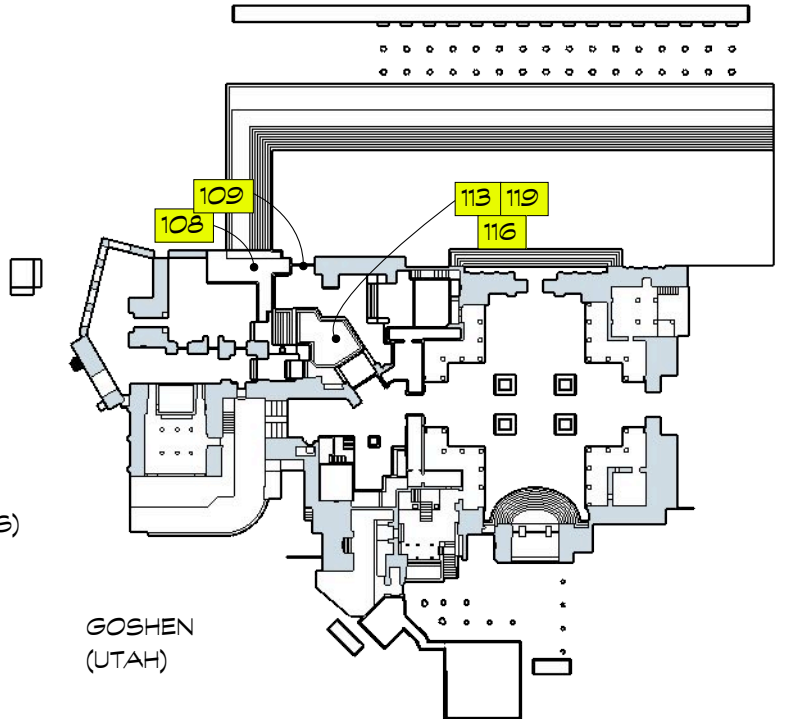
EPISODE 1

ON PROPERTY: 100 117 118 126 (SEE ATTACHED MAP)

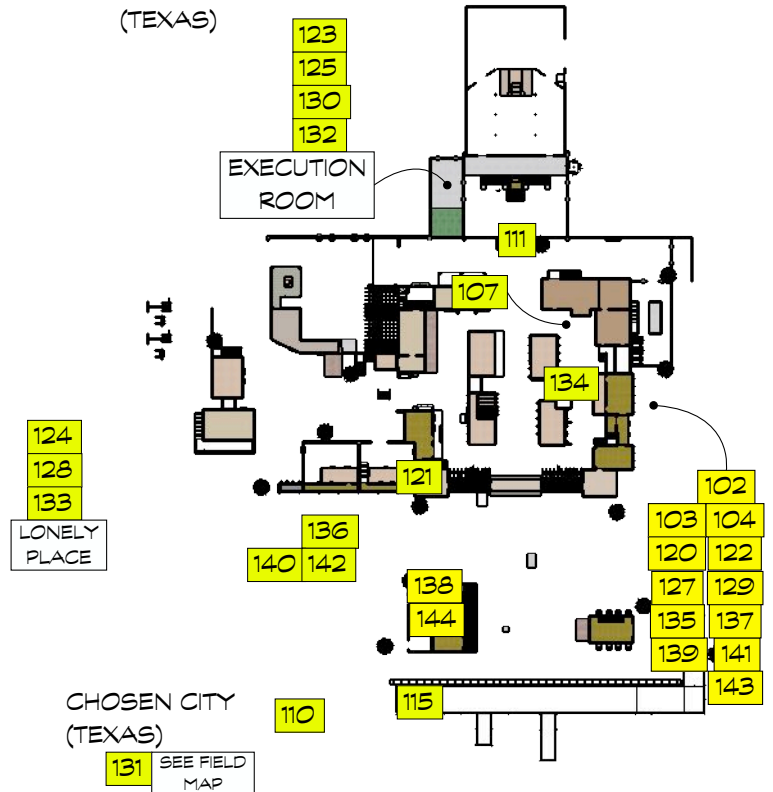
SETS

EPISODE 1

- 100 - EXT. ROAD TO JUDEA (UTAH)
- 102 - INT. HOUSE OF ZECHARIAH - KITCHEN (TEXAS)
- 103 - INT. HOUSE OF ZECHARIAH - DOORWAY (TEXAS)
- 104 - EXT. YARD OF ZECHARIAH - CONTINUOUS (TEXAS)
- 105/106 INT. HEROD'S PALACE - DANCE STUDIO (SOUTHSIDE STAGE)
- 107 EXT. CAPERNAUM - MISSION HOUSE (TEXAS)
- 108 INT. MACHAERUS PALACE - HALLWAY (UTAH)
- 109 INT. MACHAERUS - JOANNA & CHUZA'S QUARTERS (UTAH)
- 110 EXT. SEA OF GALILEE - SHORE (TEXAS)
- 111 EXT. CAPERNAUM SYNAGOGUE - COURTYARD (TEXAS)
- 112 INT. CAPERNAUM SYNAGOGUE - BETH MIDRASH (STAGE)
- 113 INT. MACHEARUS - BANQUET HALL (UTAH)
- 114 INT. MACHAERUS - DUNGEON (SOUTHSIDE STAGE)
- 115 EXT. SCENIC OVERLOOK - GOLDEN HOUR (TEXAS)
- 116 INT. MACHEARUS - BANQUET HALL (UTAH)
- 117 EXT. RURAL ROAD - (UTAH) DUSK FOR NIGHT
- 118 INT. CARRIAGE - (UTAH)
- 119 INT. MACHAERUS - BANQUET HALL (UTAH)
- 120 EXT. ZECHARIAH COURTYARD (TEXAS)
- 121 INT. MACHAERUS - DUNGEON HALLWAY (TEXAS)
- 122 EXT. ZECHARIAH COURTYARD (TEXAS)
- 123 INT. EXECUTION ROOM (TEXAS)
- 124 EXT. OUTSIDE CAPERNAUM - LONELY PLACE (TEXAS)
- 125 INT. EXECUTION ROOM (TEXAS)
- 126 EXT. RURAL GALILEE (UTAH)
- 127 EXT. ZECHARIAH COURTYARD (TEXAS)
- 128 EXT. LONELY PLACE (TEXAS)
- 129 EXT. ZECHARIAH COURTYARD (TEXAS)
- 130 INT. EXECUTION ROOM (TEXAS)
- 131 EXT. RURAL GALILEE (TEXAS)
- 132 INT. EXECUTION ROOM (TEXAS)
- 133 EXT. LONELY PLACE (TEXAS)
- 134 EXT. CAPERNAUM STREET (TEXAS)
- 135 EXT. ZECHARIAH COURTYARD (TEXAS)
- 136 EXT. CAPERNAUM STREET (TEXAS)
- 137 EXT. ZECHARIAH COURTYARD (TEXAS)
- 138 EXT. ANDREW'S HOUSE (TEXAS)
- 139 EXT. ZECHARIAH COURTYARD (TEXAS)
- 140 EXT. CAPERNAUM STREET (TEXAS)
- 141 EXT. ZECHARIAH COURTYARD (TEXAS)
- 142 EXT. CAPERNAUM STREET (TEXAS)
- 143 EXT. ZECHARIAH COURTYARD (TEXAS)
- 144 EXT. ANDREW'S HOUSE (TEXAS)



ON STAGE (TEXAS)



The CHOSEN

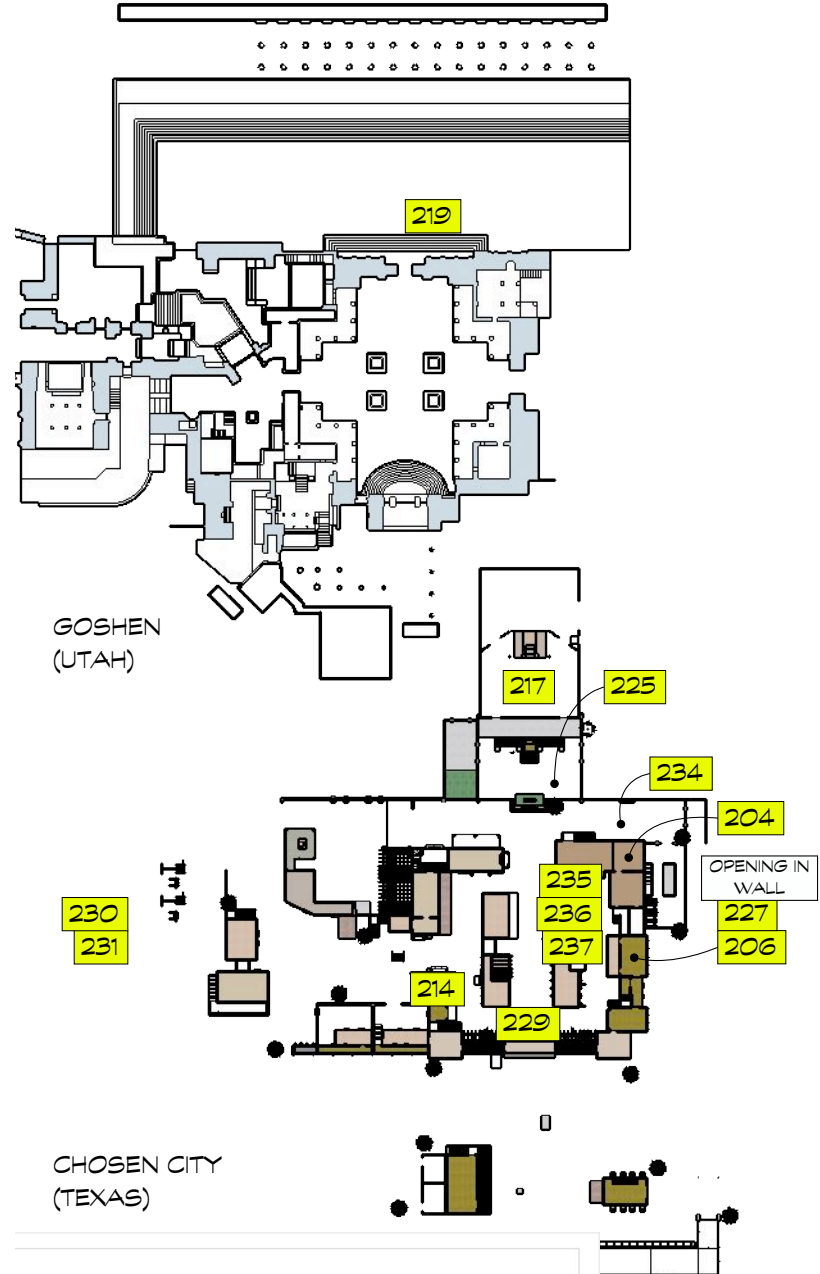
EPISODE 2

SETS

EPISODE 2

- 200 EXT. RURAL ROAD- DREAM (UTAH)
- 201 OMITTED
- 202 OMITTED
- 203 OMITTED
- 204 INT. MISSION HOUSE -STUDY (TEXAS)
- 205 INT. MISSION HOUSE -MAIN FLOOR (TEXAS)
- 206 INT. YUSIF'S HOME - (TEXAS)
- 207 INT. CAPERNAUM SYNAGOGUE - YUSSIF'S OFFICE (STAGE)
- 208-209 INT. CAPERNAUM TEMPLE HALLWAY (STAGE)
- 212 INT. ROMAN AUTHORITY (STAGE)
- 213 EXT. ROAD TO CAESAREA PHILIPPI (UTAH)
- 214 INT. JERUSALEM HALL OF PRIESTS (TEXAS)
- 215 EXT. ROAD TO CAESAREA PHILIPPI (UTAH)
- 217 INT. JERUSALEM - SANHEDRIN (TEXAS)
- 218 EXT. CAESAREA PHILIPPI GATES OF HELL (UTAH) VFX MIX
- 219 EXT. JERUSALEM TEMPLE STAIRS (UTAH)
- 220 EXT. DISCIPLES' CAMP (TEXAS)
- 221 EXT. JESUS' CAMP (TEXAS)
- 222 EXT. DISCIPLES' CAMP (TEXAS)
- 223 EXT. ROAD TO GALILEE (UTAH)
- 224 INT. CAPERNAUM TEMPLE - YUSSIF'S OFFICE (STAGE)
- 225 EXT. CAPERNAUM TEMPLE (TEXAS)
- 226 INT. CAPERNAUM TEMPLE - YUSSIF'S OFFICE (STAGE)
- 227 INT. YUSSIF'S HOME - BEDROOM (TEXAS)
- 228 INT. PETER'S HOME - BEDROOM (STAGE)
- 229 EXT. CAPERNAUM (TEXAS)
- 230 EXT. FOREST (TEXAS)
- 231 EXT. JESUS CAMP (TEXAS)
- 232 INT. ROMAN AUTHORITY - QUINTUS OFFICE (STAGE)
- 233 INT. ROMAN AUTHORITY - HALLWAY (STAGE)
- 234 EXT. CAPERNAUM - STREET/MATTHEW'S (TEXAS)
- 235 EXT. MISSION HOUSE (TEXAS)
- 236 EXT. CAPERNAUM - STREET (TEXAS)
- 237 EXT. MISSION HOUSE (TEXAS)

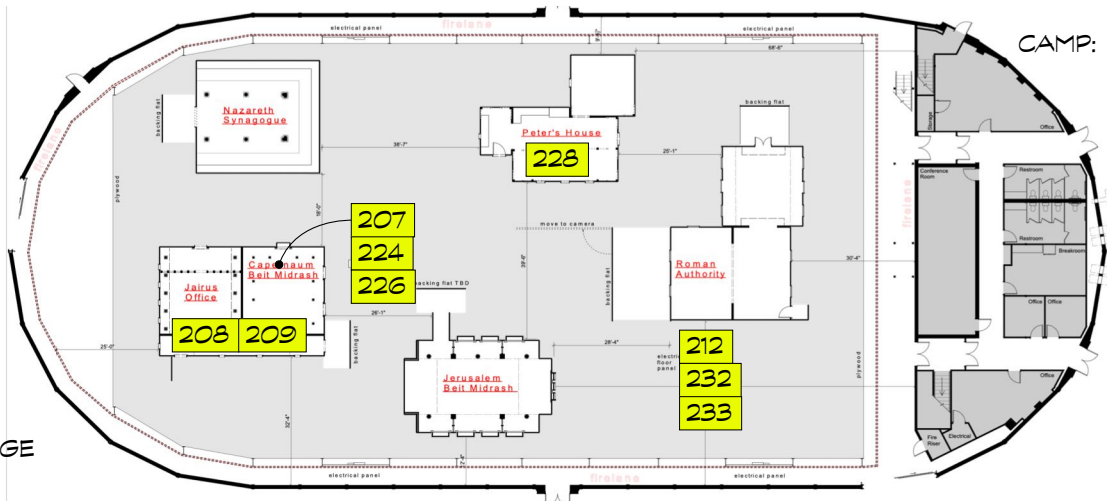
ON PROPERTY: 200 213 215 218 223



CHOSEN CITY (TEXAS)

CAMP: 220
221 222
SEE FIELD MAP

ON STAGE (TEXAS)



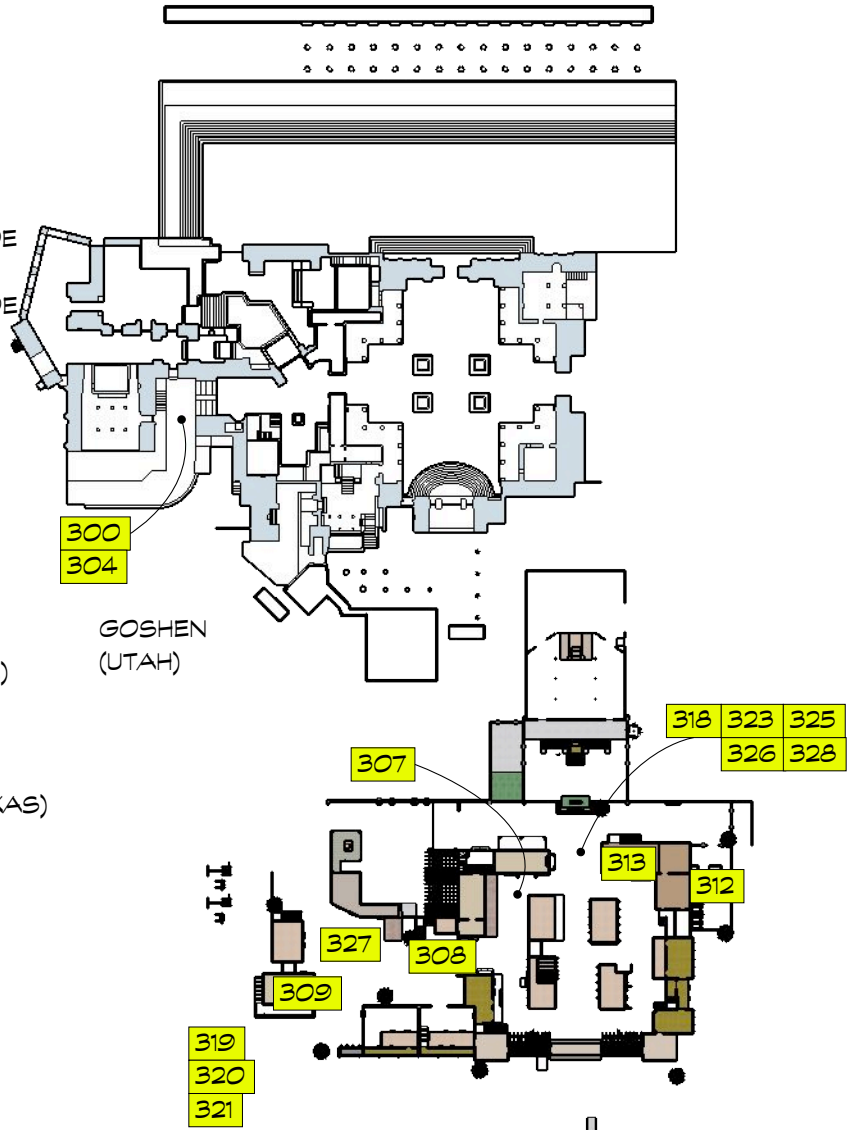
The CHOSEN

ON PROPERTY: 301 VFX SHOT

SETS

EPISODE 3

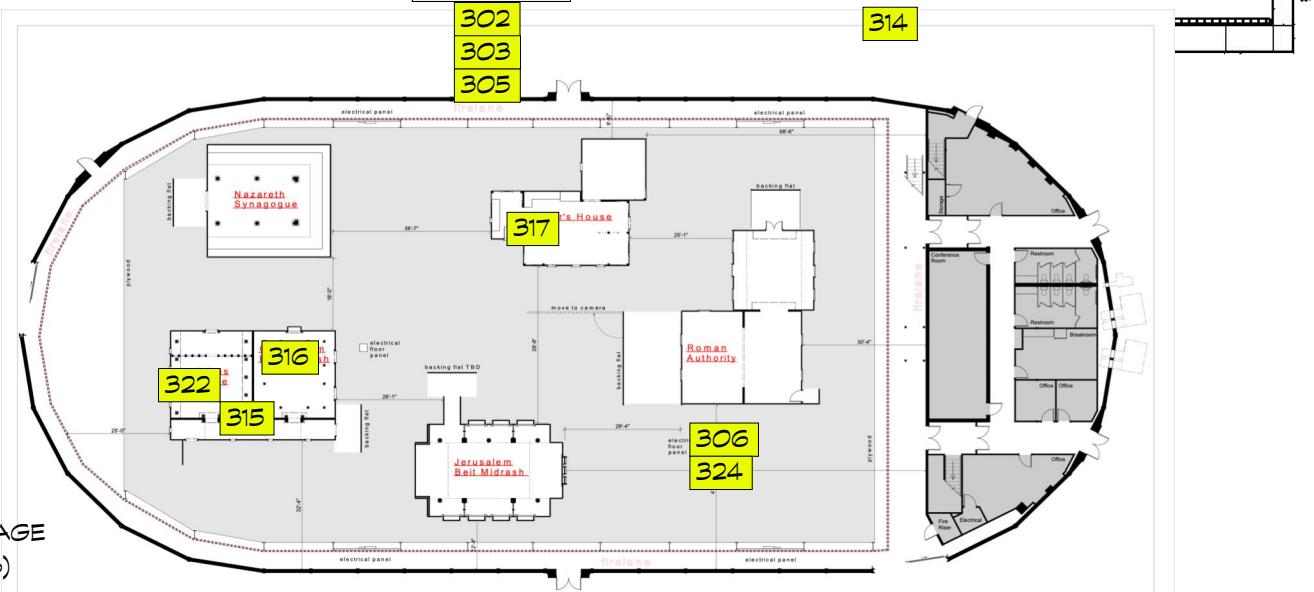
- 300 EXT. ROYAL PALACE - COURTYARD (UTAH)
- 301 EXT CITY OF JERUSALEM - ESTABLISHING (VFX)
- 302 INT. ROYAL PALACE - KING'S CHAMBER (SOUTHSIDE STAGE)
- 303 INT. ROYAL PALACE - KING'S CHAMBER (SOUTHSIDE STAGE)
- 304. EXT. ROYAL PALACE - COURTYARD (UTAH)
- 305 INT. ROYAL PALACE - BANQUET HALL (SOUTHSIDE STAGE)
- 306 INT. ROMAN AUTHORITY (STAGE)
- 307/308 EXT. CAPERNAUM STREET (TEXAS)
- 309 INT. HOUSE OF ZEBEDEE (TEXAS)
- 312 EXT. MISSION HOUSE- COURTYARD (TEXAS)
- 313 INT. MISSION HOUSE - OIL WORKSHOP (TEXAS)
- 314 EXT. SEA OF GALILEE - SHORE (TEXAS)
- 315 INT. CAPERNAUM SYNAGOGUE - HALLWAY (STAGE)
- 316 INT. CAPERNAUM BEIT MIDRASH (STAGE)
- 317 INT. PETER'S HOME (STAGE)
- 318 EXT. CAPERNAUM SQUARE (TEXAS)
- 319/320/321 EXT. CAPERNAUM STREET - TENT CITY (TEXAS)
- 322 INT. CAPERNAUM SYNAGOGUE (STAGE)
- 323 EXT. CAPERNAUM SQUARE (TEXAS)
- 324 INT. ROMAN AUTHORITY (STAGE)
- 325 EXT. CAPERNAUM SQUARE (TEXAS)
- 326 EXT. CAPERNAUM SQUARE (TEXAS)
- 327 EXT. CAPERNAUM ALLEY (TEXAS)
- 328 EXT. CAPERNAUM SQUARE (TEXAS)



GOSHEN (UTAH)

SOUTHSIDE STAGE

CHOSEN CITY (TEXAS)



ON STAGE (TEXAS)

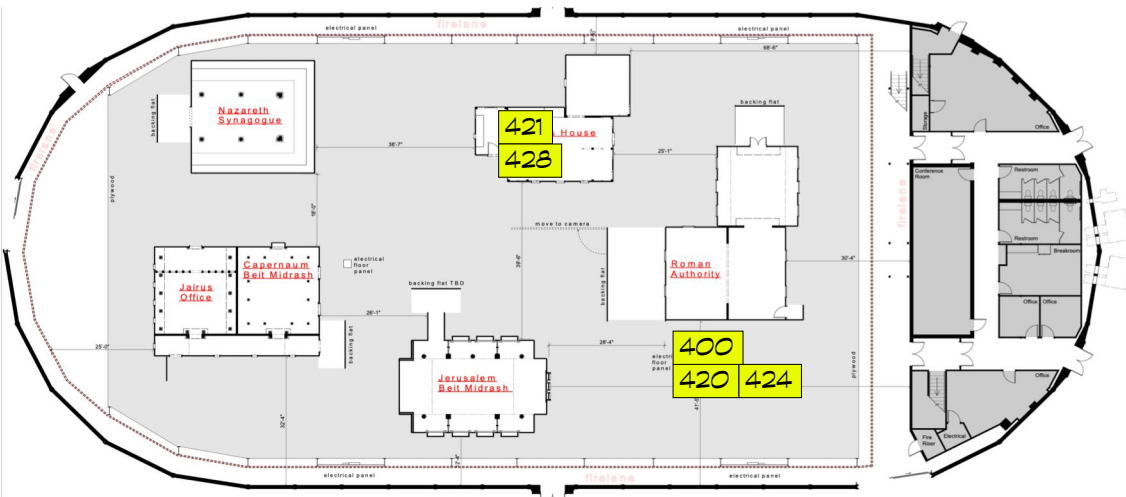
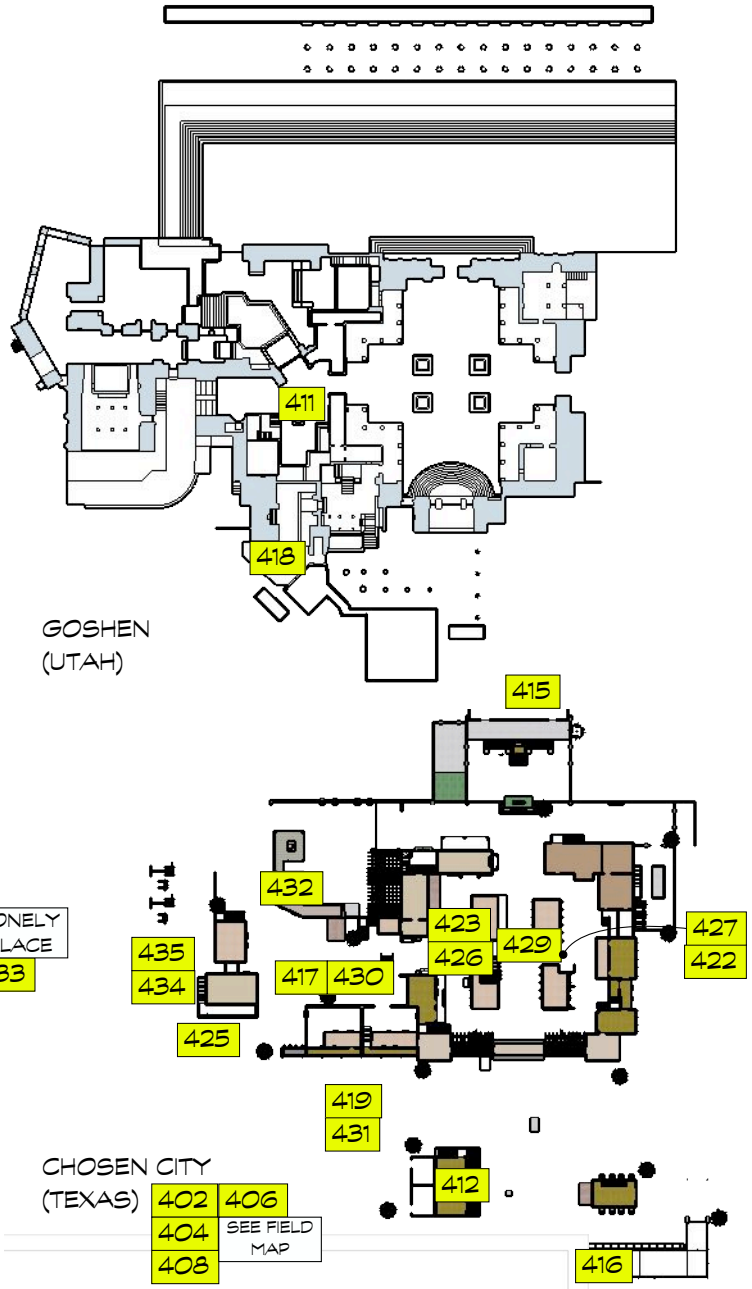
The CHOSEN

ON PROPERTY: 401 403 405 407 409 410 413 414

SETS

EPISODE 4

- 400 ROMAN AUTHORITY - HALLWAY (STAGE)
- 401 EXT. ROAD TO TEL DOR (UTAH)
- 402 EXT. CAPERNAUM OUTSKIRTS (TEXAS)
- 403 EXT. ROAD TO TEL DOR (UTAH)
- 404 EXT. CAPERNAUM OUTSKIRTS (TEXAS)
- 405 EXT. ROAD TO TEL DOR (UTAH)
- 406 EXT. CAMP (TEXAS)
- 407 EXT. ROAD TO TEL DOR (UTAH)
- 408 EXT. CAPERNAUM OUTSKIRTS (TEXAS)
- 409 EXT. ROAD TO TEL DOR (UTAH)
- 410 EXT. ROAD TO TEL DOR (UTAH)
- 411 EXT. JERUSALEM CITY GATE (UTAH)
- 412 INT. ANDREW'S HOUSE (TEXAS)
- 413 EXT. RURAL ROAD (UTAH)
- 414 EXT. REGION OF THE GERASENES (UTAH)
- 415 INT. JERUSALEM SANHEDRIN (TEXAS)
- 416 EXT. CAPERNAUM DOCKS (TEXAS)
- 417 EXT. CAPERNAUM MARKETPLACE (TEXAS)
- 418 INT. TEL-DOR SYNAGOGUE (STAGE)
- 419 EXT. JUST OUTSIDE CAPERNAUM (TEXAS)
- 420 INT. ROMAN AUTHORITY (STAGE)
- 421 INT. PETER'S HOUSE (STAGE)
- 422 EXT. PETER'S HOUSE (TEXAS)
- 423 EXT. CAPERNAUM STREET (TEXAS)
- 424 INT. ROMAN AUTHORITY (STAGE)
- 425 INT/EXT. HOUSE OF ZEBEDEE (TEXAS)
- 426 EXT. CAPERNAUM STREET (TEXAS)
- 427 EXT. PETER'S HOUSE (TEXAS)
- 428 INT. PETER'S HOUSE (TEXAS/STAGE)
- 429 EXT. CAPERNAUM STREET (TEXAS)
- 430 EXT. CAPERNAUM SQUARE (TEXAS)
- 431 EXT. WATERFRONT ROAD (TEXAS)
- 432 INT. GAIVS' HOUSE - ENTRYWAY (TEXAS)
- 433 EXT. LONELY PLACE - ZEB'S OLIVE GROVE (TEXAS)
- 434-435 EXT. OLIVE PRESS (TEXAS) CREATE BEHIND ZEB'S HOUSE



ON STA
(TEXAS)

The CHOSEN

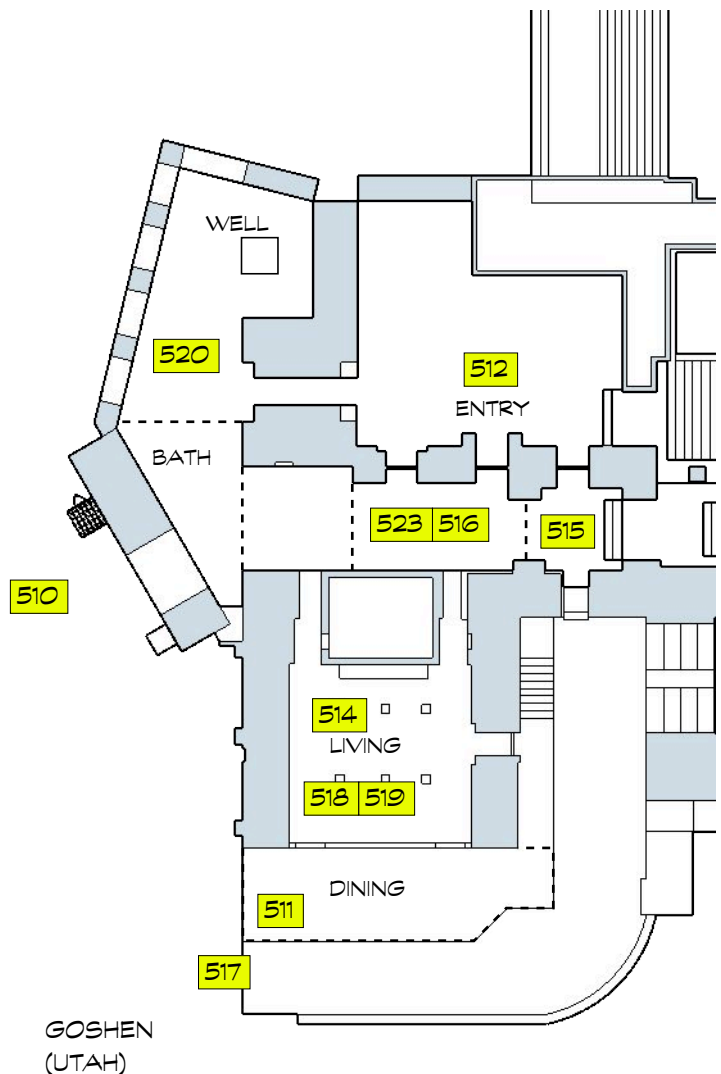
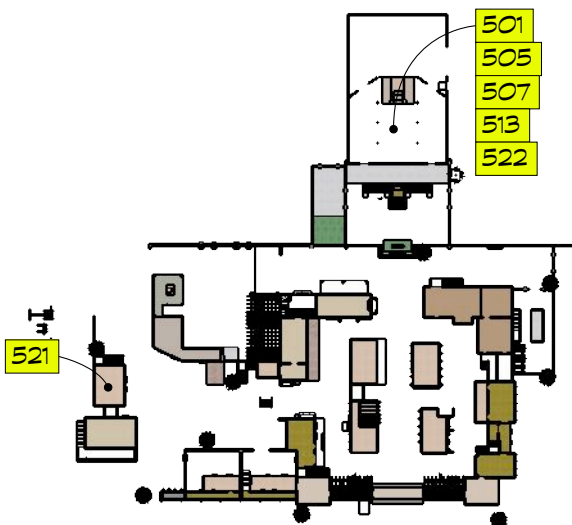
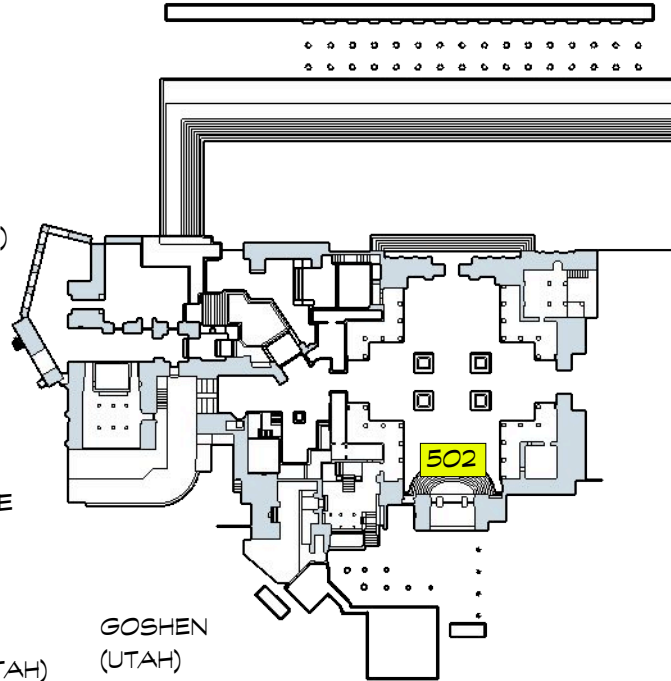
EPISODE 5

ON PROPERTY: 500 503 504 506 509

SETS

EPISODE 5

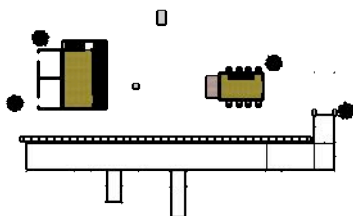
- 500 EXT. ROAD TO JERUSALEM - (UTAH)
- 501 INT. JERUSALEM SANHEDRIN - (TEXAS)
- 502 EXT. JERUSALEM SANHEDRIN COURTYARD - (UTAH)
- 503 EXT. DISCIPLES CAMP (UTAH)
- 504 EXT. ROAD TO BETHANY - UTAH
- 505 INT. JERUSALEM SANHEDRIN - (TEXAS)
- 506 EXT. ROAD TO BETHANY - (UTAH)
- 507 INT. JERUSALEM SANHEDRIN - (TEXAS)
- 508 INT. JERUSALEM SANHEDRIN - HALLWAY (STAGE)
- 509 EXT. ROAD TO BETHANY - (UTAH)
- 510 EXT. ROAD TO BETHANY - OUTSIDE LAZARUS' HOME (UTAH)
- 511 INT. HOUSE OF LAZARUS (UTAH)
- 512 EXT/INT. HOUSE OF LAZARUS - (UTAH)
- 513 INT. JERUSALEM SANHEDRIN - (TEXAS)
- 514 INT. BETHANY- LAZARUS' HOUSE - LIVING ROOM (UTAH)
- 515 INT. BETHANY - LAZARUS' HOUSE KITCHEN (UTAH)
- 516 EXT. BETHANY - LAZARUS' HOUSE - (UTAH)
- 517 EXT. BETHANY - LAZARUS' HOUSE (UTAH)
- 518 INT. BETHANY - LAZARUS' HOUSE (UTAH)
- 519 EXT. BETHANY - LAZARUS' HOUSE (UTAH)
- 520 EXT. BETHANY - LAZARUS' HOUSE GARDEN (UTAH)
- 521 INT. BETHANY - HADA'S OFFICE (TEXAS)
- 522 INT. JERUSALEM SANHEDRIN (TEXAS)
- 523 INT. BETHANY - LAZARUS' HOUSE (UTAH)



CHOSEN CITY (TEXAS)

508

STAGE
BEIT MIDRASH



GOSHEN (UTAH)

The CHOSEN

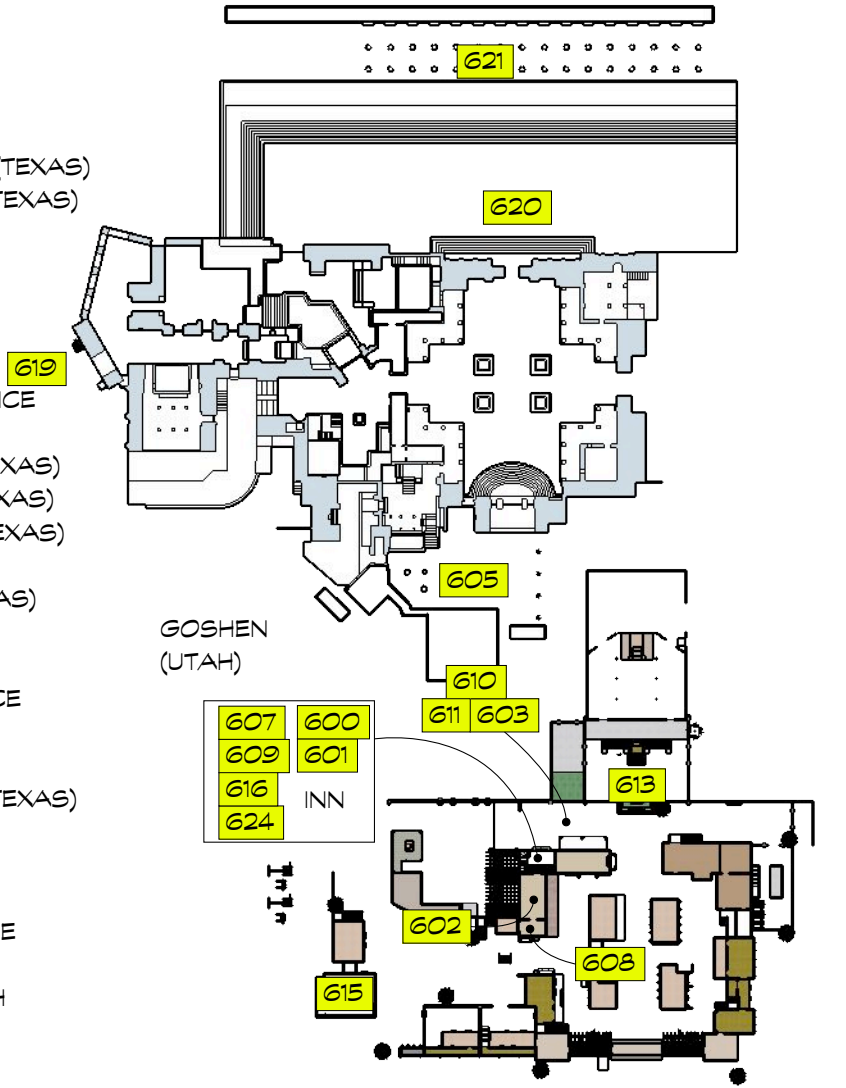
EPISODE 6

ON PROPERTY: 612 618 622

SETS

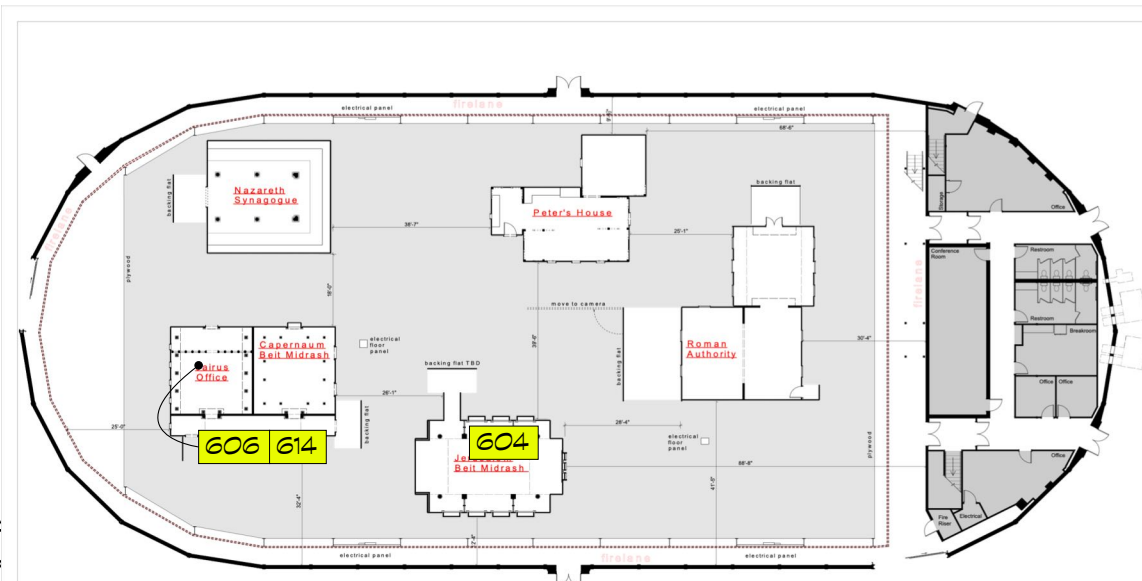
EPISODE 6

- 600 INT. PEREAN VILLAGE INN - COMMON ROOM (TEXAS)
- 601 INT. PEREAN VILLAGE INN - COMMON ROOM (TEXAS)
- 602 INT. PEREAN VILLAGE INN - DISCIPLES ROOM (TEXAS)
- 603 EXT. PEREAN VILLAGE INN (TEXAS)
- 604 INT. JERUSALEM BEIT-MIDRASH (STAGE)
- 605 EXT. BETHANY - MARKET (UTAH)
- 606 INT. CAPERNAUM SYNAGOGUE - JAIRUS' OFFICE (STAGE)
- 607 INT. PEREAN VILLAGE INN - PUBLIC SPACE (TEXAS)
- 608 INT. PEREAN VILLAGE INN - JESUS' ROOM (TEXAS)
- 609 INT. PEREAN VILLAGE INN - PUBLIC SPACE (TEXAS)
- 610 EXT. PEREAN VILLAGE INN - YARD (TEXAS)
- 611 EXT. PEREAN VILLAGE INN - CASSIA TREE (TEXAS)
- 612 EXT. FIELD - (TEXAS)
- 613 EXT. CAPERNAUM SYNAGOGUE (TEXAS)
- 614 INT. CAPERNAUM SYNAGOGUE - JAIRUS' OFFICE (STAGE)
- 615 INT. ZEBEDEE'S HOUSE - KITCHEN (TEXAS)
- 616 INT. PEREAN VILLAGE INN - COMMON ROOM (TEXAS)
- 617 EXT. JORDAN RIVER - (TEXAS)
- 618 EXT. RURAL JUDEA - (UTAH)
- 619 EXT. JERUSALEM - CITY GATE (UTAH)
- 620 EXT. TEMPLE COURTS - LIVESTOCK EXCHANGE STEPS OF WOMEN'S COURT (UTAH)
- 621 EXT. JERUSALEM TEMPLE - SOLOMON'S PORCH (UTAH)
- 622 EXT. RURAL JUDEAN ROAD (UTAH)
- 623 EXT. JORDAN RIVER (TEXAS)
- 624 INT. PEREAN VILLAGE INN - COMMON ROOM (TEXAS)



CHOSEN CITY (TEXAS) 617 623

ON STA (TEXAS)



The CHOSEN

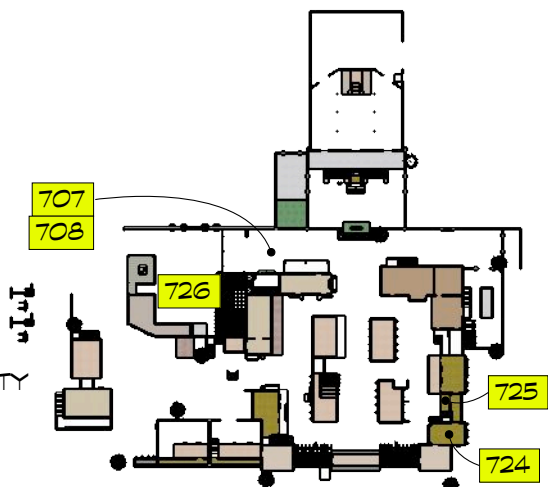
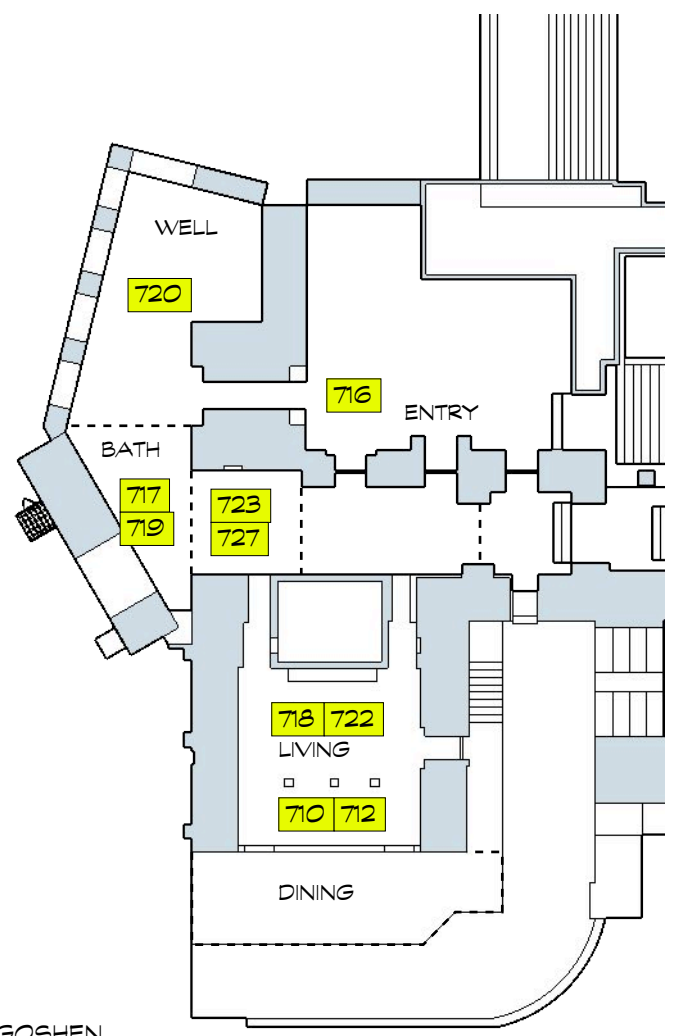
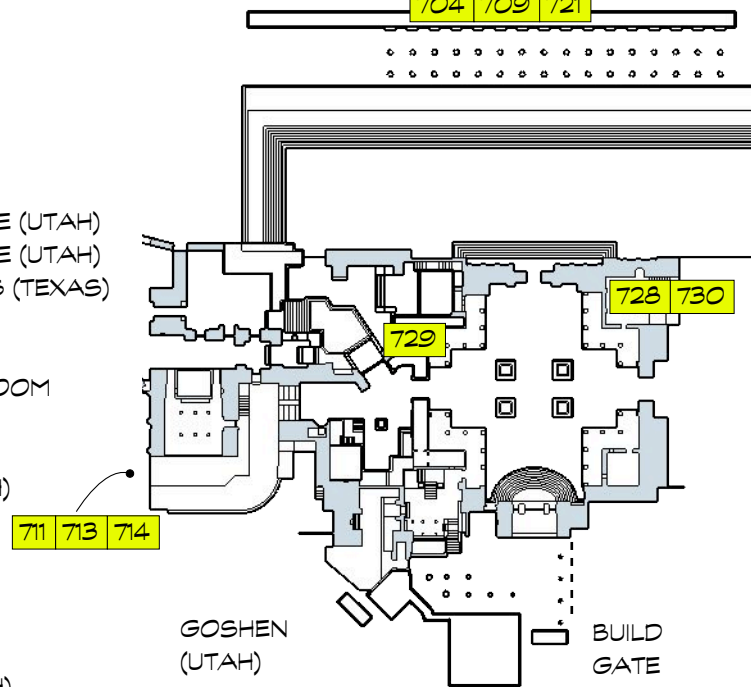
EPISODE 7

SETS

EPISODE 7

- 700 EXT. GAUL - ROAD (UTAH)
- 701 EXT. GAUL - MOUNTAIN (UTAH)
- 702 EXT. GAUL - MOUNTAIN CAVES (UTAH)
- 703 INT. MOUNTAINS OF LA SAINTE BAUME CAVE (UTAH)
- 704 INT. MOUNTAINS OF LA SAINTE BAUME CAVE (UTAH)
- 707 EXT. PEREAN VILLAGE INN EDGE OF WOODS (TEXAS)
- 708 EXT. PEREAN VILLAGE INN (TEXAS)
- 709 EXT. JUDEA - ROAD TO BETHANY (UTAH)
- 710 INT. BETHANY HOUSE OF LAZARUS - MAIN ROOM (UTAH)
- 711 EXT. BETHANY - CITY GATES (UTAH)
- 712 INT. HOUSE OF LAZARUS - MAIN ROOM (UTAH)
- 713 EXT. BETHANY - STREET (UTAH)
- 714 EXT. BETHANY - CITY GATES (UTAH)
- 715 EXT. BETHANY - TOMB OF LAZARUS (UTAH)
- 716 EXT. BETHANY HOUSE OF LAZARUS (UTAH)
- 717 INT. BETHANY - BATHING ROOM (UTAH)
- 718 INT. HOUSE OF LAZARUS - MAIN ROOM (UTAH)
- 719 INT. HOUSE OF LAZARUS - BATHING ROOM (UTAH)
- 720 EXT. BETHANY HOUSE OF LAZARUS - WELL (UTAH)
- 721 INT. MOUNTAINS OF LA SAINTE BUME - CAVE (UTAH)
- 722 EXT. BETHANY - HOUSE OF LAZARUS (UTAH)
- 723 INT. BETHANY HOUSE OF LAZARUS - LAZ BEDROOM (UTAH)
- 724 INT. ARNAN'S HOME (TEXAS)
- 725 INT. SHMUEL'S BEDROOM (TEXAS)
- 726 EXT. SHAMMAI'S HOME (TEXAS)
- 727 INT. BETHANY HOUSE OF LAZARUS - LAZARUS' OFFICE (UTAH)
- 728 INT. BETHANY HOUSE OF LAZARUS - GUEST ROOM (UTAH)
- 729 INT. BETHANY HOUSE OF LAZARUS - WOMEN'S QUARTERS (UTAH)
- 730 INT. BETHANY HOUSE OF LAZARUS - JESUS' BEDROOM (UTAH)
- 731 EXT. BETHANY - TOMB OF LAZARUS (UTAH)

ON PROPERTY: 700 701 702 703 TOMB: 715 731
704 709 721



CHOSEN CITY (TEXAS)

GOSHEN (UTAH)

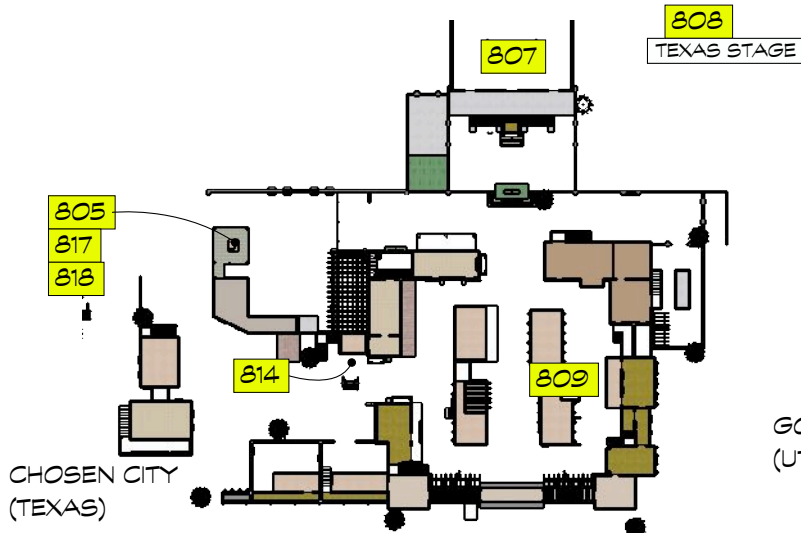
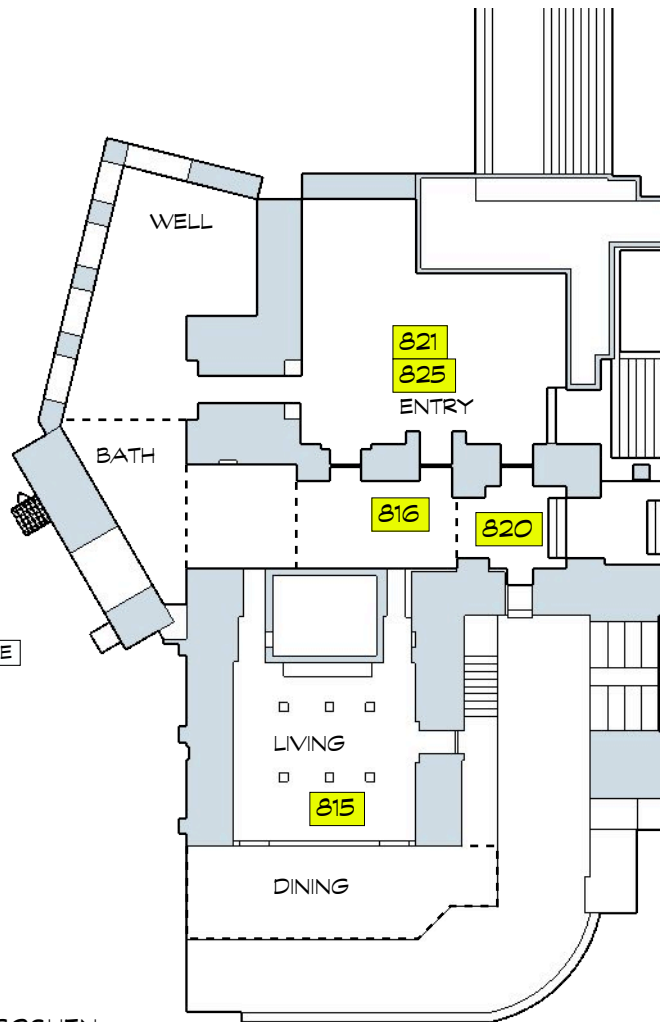
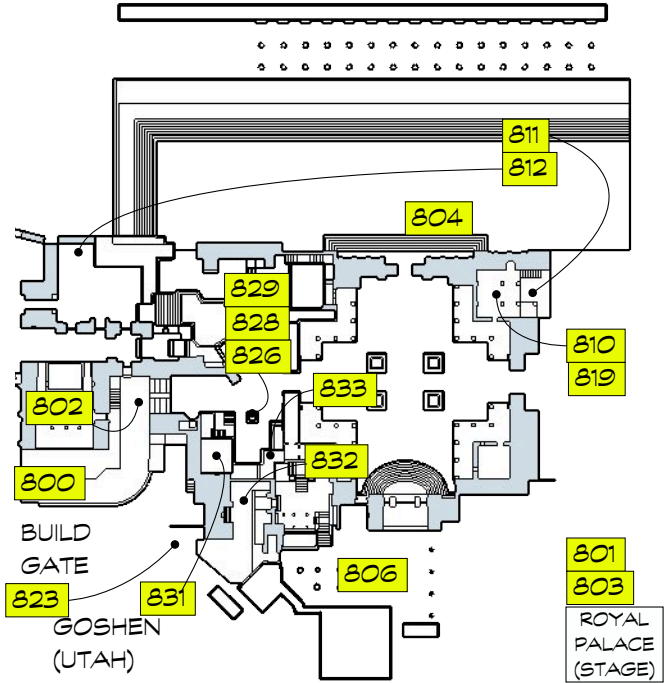
The CHOSEN

EPISODE 8

EPISODE 8

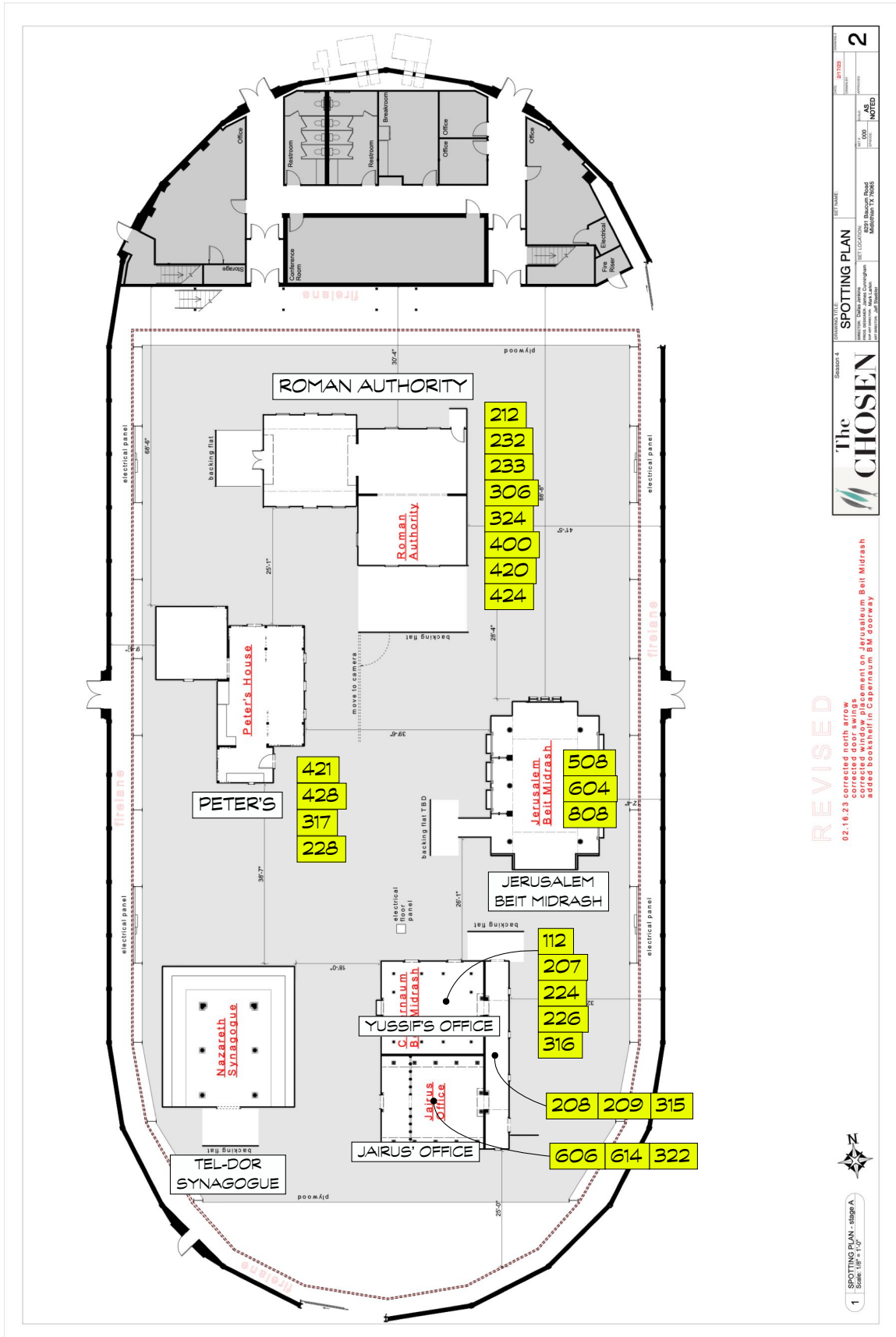
- 800 EXT. JERUSALEM - CITY GATES (UTAH)
- 801 INT. JERUSALEM - KING'S CHAMBER (SOUTHSIDE STAGE)
- 802 INT. JERUSALEM - PALACE COURTYARD (UTAH)
- 803 INT. JERUSALEM - KING'S CHAMBER (SOUTHSIDE STAGE)
- 804 EXT. JERUSALEM - TEMPLE (UTAH)
- 805 EXT. JERUSALEM GOV MANSION - BALCONY (TEXAS)
- 806 INT. BETHANY - APOTHECARY (UTAH)
- 807 INT. JERUSALEM - SANHEDRIN (TEXAS)
- 808 INT. JERUSALEM - BEIT MIDRASH (TEXAS STAGE)
- 809 EXT. CAPERNAUM - PETER'S HOUSE (TEXAS)
- 810 INT. BETHANY HOUSE OF LAZARUS - BEDROOM (UTAH)
- 811 INT. BETHANY HOUSE OF LAZARUS - SIDE ROOM (UTAH)
- 812 EXT. BETHANY HOUSE OF LAZARUS - (UTAH)
- 813 EXT. BETHANY - WOODS (UTAH)
- 814 EXT. JERUSALEM - PILATE'S COMPOUND (TEXAS)
- 815 INT. BETHANY HOUSE OF LAZARUS MAIN ROOM (UTAH)
- 816 EXT. BETHANY HOUSE - GRAND ENTRANCE (UTAH)
- 817 INT. JERUSALEM - BANQUET HALL (TEXAS)
- 818 EXT. JERUSALEM BANQUET HALL - BALLCONY (TEXAS)
- 819 INT. BETHANY HOUSE OF LAZARUS - BEDROOM (UTAH)
- 820 INT. BETHANY HOUSE OF LAZARUS - KITCHEN (UTAH)
- 821 EXT. BETHANY - HOUSE OF LAZARUS (UTAH)
- 822 EXT. MOUNT OF OLIVES (UTAH)
- 823 EXT. BETHPHAGE - STREET (UTAH)
- 824 EXT. SHORT ROAD TO JERUSALEM (UTAH)
- 825 EXT. BETHANY HOUSE OF LAZARUS (UTAH)
- 826 EXT. JERUSALEM - CITY GATES (UTAH)
- 827 EXT. MOUNT OF OLIVES (UTAH)
- 828 INT. JERUSALEM STREET-ROYAL CARRIAGE (UTAH)
- 829 EXT. JERUSALEM STREET (UTAH)
- 830 EXT. MOUNT OF OLIVES (UTAH)
- 831 INT/EXT. JERUSALEM GOVENOR'S MANSION - BALCONY (UTAH)
- 832 EXT. JERUSALEM - STREET (UTAH)
- 833 EXT. JERUSALEM RESIDENCE CAIAPHAS - (UTAH)
- 834 EXT. MOUNT OF OLIVES (UTAH)

MOUNT OF OLIVES
ON PROPERTY: 822 824 827 830 834 813



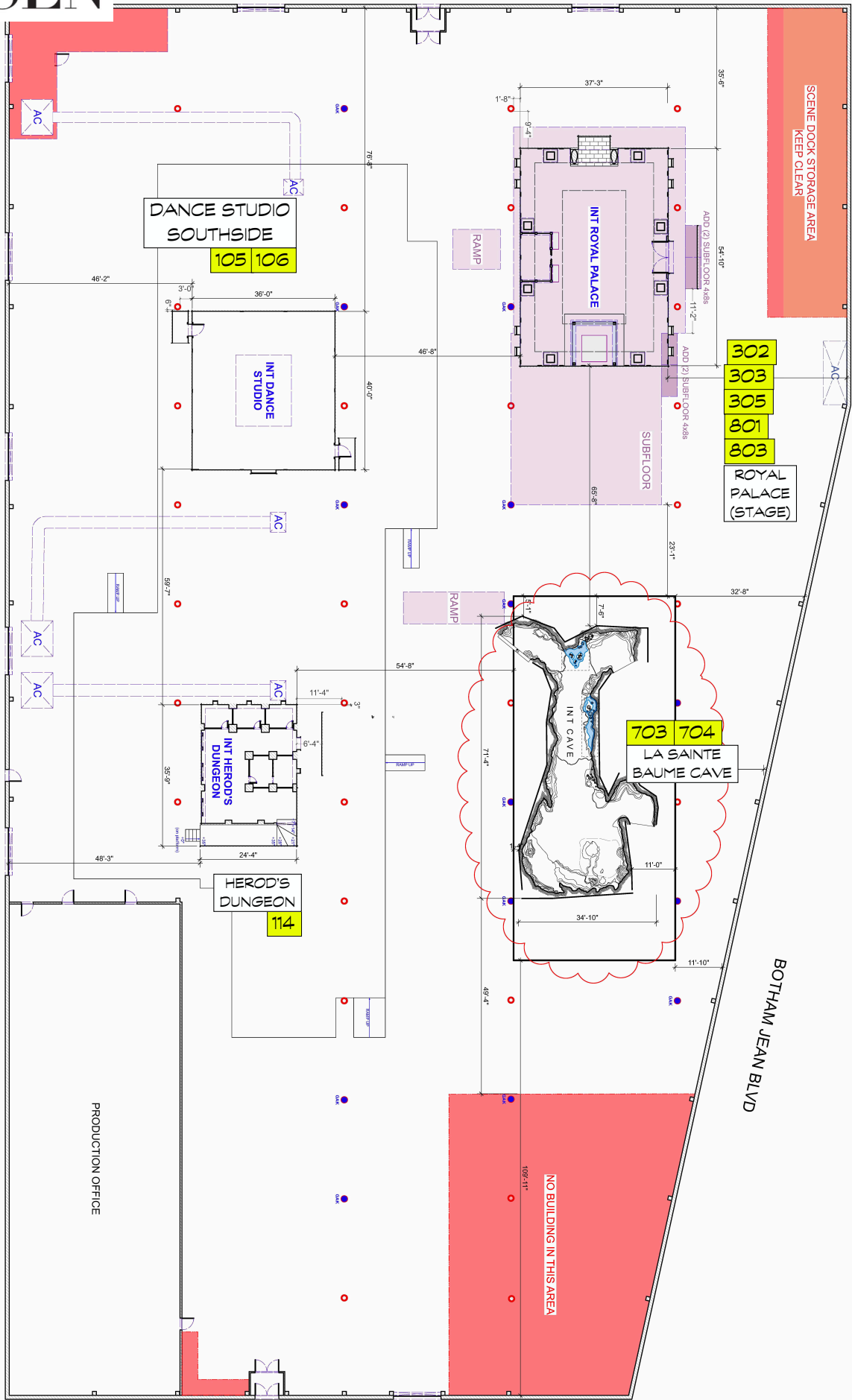
GOSHEN (UTAH)

CHOSEN CITY (TEXAS)



The CHOSEN

SEASON SOUTHSIDE STAGE

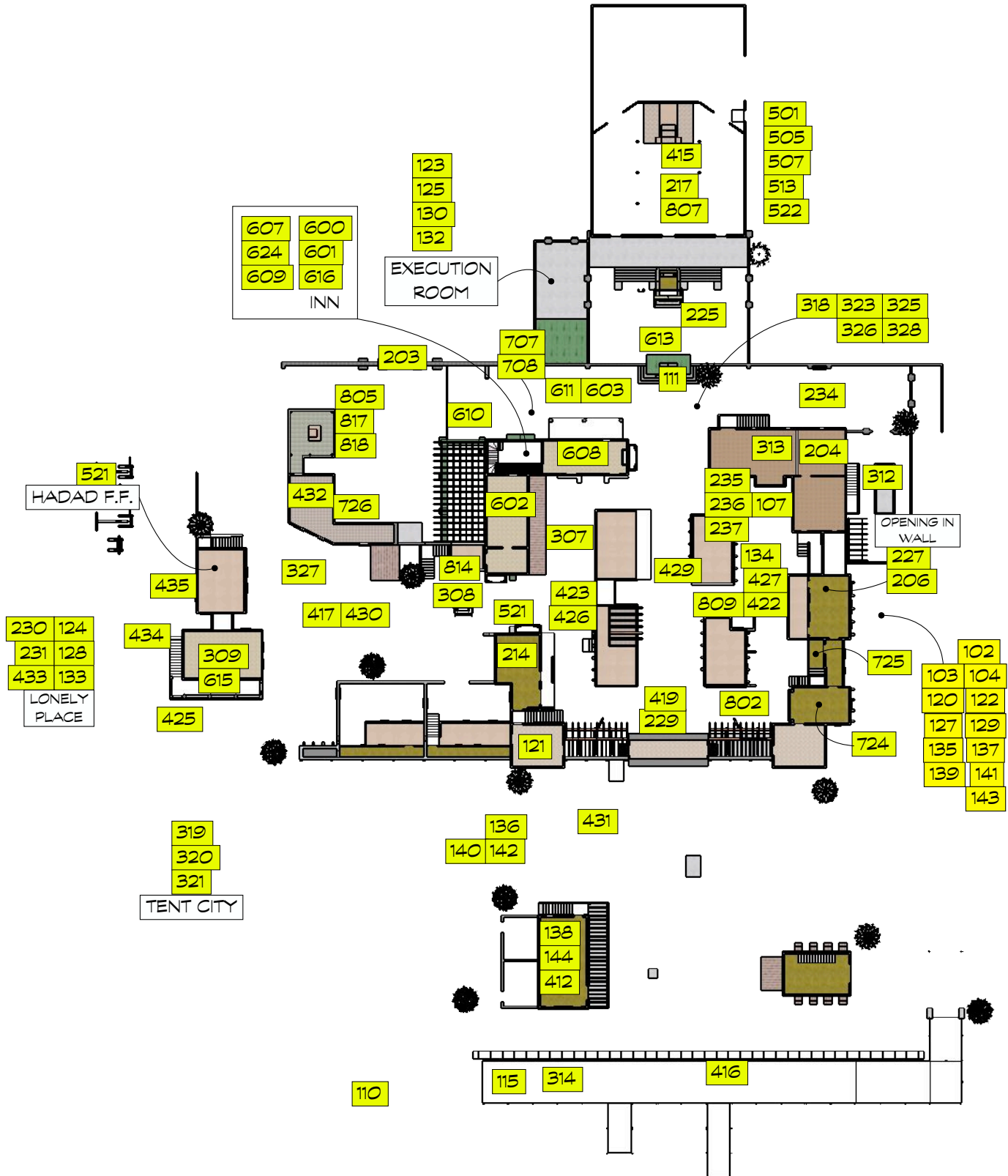


The CHOSEN

SEASON TEXAS CITY

ON PROPERTY:

131	220	221	222	402	404	406	408	
617	623						OLD TREE	



The CHOSEN

SEASON GOSHEN (LAZARUS)

